

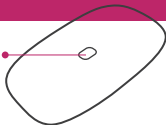
Battery Compartment

Wireless Thermometer WT702

User Manual

Raing Medical Company

Temperature Probe



Content

01	Accessories	14	Application
02	Upload Battery	15	Maintenance
03	Download App	16	Cleaning&Disinfection
04	Build Connection	17	Technical Specifications
04	Wearing Description	18	Functional Description
06	Operating Instructions	19	Symbol Definition
09	Troubleshooting	20	Disclaimer
12	Important Precautions	21	Declaration
14	Intended Use	21	Copyright Statement

Word Definitions:

Thermometer/Device: Smart Fertility Tracker.

Receiver: Smart devices that can run iFertracker app and receive Bluetooth signal from Smart Fertility Tracker.

Accessories

1. A CR2025 battery
2. A battery tool
3. Medical sticker (1 box)
4. User manual
5. Guarantee card
6. Certificate of competency

Upload Battery

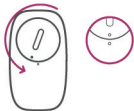
1. Open battery compartment



2. Upload a CR2025 battery



3. Close battery compartment



Download App

1. Go to iFertracker Download Center
[http:// www.raiing.com/iFertracker/download.php](http://www.raiing.com/iFertracker/download.php)

2. Download iFertracker and set up user account.



iFertracker

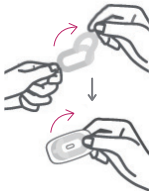


Build Connection



Put thermometer on the top of screen of receiver to connect.

Wearing Description



1. Wearing Preparation



2. Wearing

Note:

1. We recommend users to use the original manufactured stickers. Wearing the thermometer in a neutral-thermal environment is recommended. **Please make sure wear the thermometer during whole night(whole sleeping period) to get accurate data.** If you feel unwell (uncomfortable or Allergic) when use the sticker, please replace other sticker as doctor's advice.
2. Please do not repaste the sticker if it appears folded, a new sticker is required.
3. Skin preparation in advance is required.
4. Please make sure the contacted area of skin stays flat and smooth.

Operating Instructions

1. Power on/off

- Power on: Thermometer will automatically power on when it is worn under the armpit. (Note: When use thermometer for the first time or just change a new battery, you should tightly touch temperature probe of thermometer with your palm until LED blink indicates power-on, and then connect the thermometer with receiver to sync time before wearing.)
- Power off: Thermometer will automatically power off when it is taken off from armpit.

2. LED indicators

- Single blink in one-second period indicates that thermometer needs to sync time with receiver.(by connecting with receiver)
- Single blink in four-second period indicates that thermometer successfully powers on.

- LED long brightness indicates battery low and cannot continues to work, please change with new button cell.

3. Frequently operating modes

- Connect to receiver for the first time to sync time:
 - 1) Turn on receiver and **open Bluetooth**, and make sure receiver's access to internet.
 - 2) Turn on the thermometer.(Tightly touch temperature probe of thermometer with your palm until LED blink indicates power-on)
 - 3) Run "iFertracker" on the receiver and sign in , put thermometer on the top of receiver, the two devices will automatically connect and sync time.
- "Connect to receiver for the first time" means the following situations : 1. Right after uploading a new battery. 2. Right after upgrading Firmware. 3. Anytime when you see LED's single blink in one-second period. When you are in these three situations, just connect thermometer with receiver to sync time before wearing.**

- Daily Use:

- 1) Go to sleep when wearing thermometer; user should sleep more than 6 hours and wear thermometer all the sleeping hours.
- 2) Take off thermometer after getting up in the morning, and put it on the top of receiver that has already started "iFertracker"App. "iFertracker" will automatically connect thermometer to sync data and then analyze. (Recommendation: user should connect thermometer with receiver every day after taking off thermometer to get information and reminders timely.)

Troubleshooting

1. Cannot turn on thermometer

- Possible Reasons

- 1) The battery power might be at shortage or no electricity.
- 2) The device itself might be damaged.

- Solutions

- 1) Please replace battery.
- 2) Restart the device.
- 3) Contact customer service.

2. Cannot make connection between thermometer and receiver

- Possible Reasons

- 1) Bluetooth on receiver might be switched off or in error.
- 2) iFertracker might not run or in error.
- 3) Out of connection range.
- 4) Already connect with another receiver.

- Solutions

- 1) Open Bluetooth on receiver.
- 2) Run iFertracker.
- 3) Put thermometer close to receiver or on the top of the screen of receiver.
- 4) Please check other receivers , if any of them connected, disconnect and connect targeting receiver.

3. No temperature data uploaded

- Possible Reasons

- 1) Did not sync time with receiver after uploading a new battery.
- 2) Measuring duration is too short. 3) Contacted area of skin is not flat and smooth.
- 4) Low battery power. 5) Accidentally connect with receiver during wearing time, already uploaded data.

- Solutions

- 1) Open iFertracker App on receiver and connect receiver with thermometer to sync time.
- 2) Please keep measuring more than 3 hours.
- 3) Please adjust wearing position.
- 4) Please replace battery.
- 5) We suggest to turn off receiver or turn off Bluetooth on receiver during wearing.

Important Precautions

In order to avoid unnecessary harm, please read the following information before using thermometer:

1. Warning: Any form of modification to this device is forbidden.
2. Do not use the device together with MRI or CT equipment.
3. Explosion danger: do not use the device in flammable anesthetic gas.
4. Doctor should make diagnosis on clinical manifestation and symptoms, only using the device as subsidiary.
5. Please check device regularly to make sure that it contacts skin tightly; otherwise the data may be inaccurate.
6. Soaking device in liquid or disinfectant may lead to incorrect data or break the device.

7. Do not press the device. If the housing is broken, please stop using the device.
8. Please pay attention to the operation temperature and humidity(see Technical Specifications). Using the device in a condition that does not satisfy the requirements may lead to measurement error.
9. The device is for indoor use only.
10. Please upgrade the application from App Store when necessary.
11. It is almost impossible that the application is incompatible with other application on your receiver. Please contact us if you meet this kind of matters.
12. The device is not sterile.
13. Please take off battery in thermometer if you will not use it in a month.

Intended Use

The Wireless Thermometer is a battery operated electronic device with intended use of measuring human armpit temperature and transmitting wireless signal of the measuring results to receiver, monitoring human body basal temperature. This system is reusable and intended for monitoring body basal temperature of females who want to get pregnant.

Application

The device is reusable and intended for body basal temperature measurement of adult. It can be used in hospital and at home. Not used in ICU and other emergency condition.

Maintenance

1. Please replace the battery when the low battery indication appears, otherwise the device will not work correctly.
2. Clean the surface of the device with 75% concentrated medicinal alcohol.
3. The temperature of storage environment should be $0^{\circ}\text{C} \sim 50^{\circ}\text{C}$ ($32^{\circ}\text{F} \sim 122^{\circ}\text{F}$), the humidity should be 10% ~ 85% and barometric pressure should be 70kPa ~ 106kPa.
4. The treatment of the device and battery at the end of their life should be in compliance with local laws and regulations.

Note: No need to regularly calibrate and maintain except uploading new battery when necessary.

Cleaning & Disinfection

The probe should be cleaned and disinfected, but no need to be sterilized. Follow the procedure outlined below.

- Cleaning and Low-Level Disinfection

Clean the surface of the device with 75% concentrated medicinal alcohol before and after using.

- Warnings

- 1) Other use of cleaning agents and disinfectants except alcohol may damage the device and shorten product lifetime or cause safety risks.
- 2) Do not soak the device in any liquid.
- 3) Do not sterilize or autoclave the device.
- 4) If you notice any deterioration or damage to probe, stop using the device immediately.

Technical Specifications

Product Name	Wireless Thermometer
Model	WT702
Size	55.6mm×31.6mm×6.5mm
Weight	6g (without battery)
Power Supply	DC 3V
Accuracy	±0.05°C (35°C-38.5°C) ±0.1°C (25°C-34.99°C & 38.51°C-45°C)
Temperature unit	°C or °F

Receiver	iPhone 4S+ (iPhone 4S, iPhone 5, iPhone 5c, iPhone 5s and future versions), iPad3+, iPad mini, iPad Air , iPod touch 5+ Android support is in progress, please refer to our website.	
Battery	CR2025	
Battery work time	60 days, 8 hours per day	
Operating Temperature	5°C-40°C	
Operating Humidity	15%-85%	
Operating Barometric pressure	86kPa-106kPa	

Functional Description

1. Body basal temperature displaying

User can check body basal temperature index and curve on receiver that run "iFertracker" after syncing data every time.

2. Low voltage indication

There is a dialogue box on receiver when a low battery ($\leq 2.7V$) device connected with the receiver.

Symbol Definition



Read user manual before use



Read user manual before use



Authorized representative in the European community



Device type is BF



Serial number



Recyclables



Manufacturer



ROHS Certification



No littering

Disclaimer

This manual is written in accordance with available information and its contents are subject to changes without notice. Raiing has made best effort to guarantee its contents accurately reliable when we write this instruction booklet. However, the company does not assume liability of the loss and damage which are caused by omissions, inaccuracies or typographical errors in this manual. Software upgrading causes discrepancies in this manual, software shall prevail. When product improves or technology changes, you may visit the company technical support website to inquire related information.

The Bluetooth® word mark, figure mark combination mark, and Bluetooth Smart and Bluetooth Smart Ready marks are all trademarks that are owned by the Bluetooth SIG and any use of such marks by Raiing is under license. Other trademarks and trade names belong to their respective owners.

Declaration

1. The EMC of the product is up to standard of IEC60601-1-2.
2. The material that contacts skin is nontoxic, nonirritating and up to standard of ISO10993-1,-5, -10.

Copyright Statement

© Raiing Medical Company all rights reserved, and it retains final right to interpret and revise this handbook and this statement.

Copyright of this manual belongs to Raiing Medical Company. Without the prior written permission, no company or individual is allowed to reproduce, copy or translate this manual and any information contained therein.



0482

Product Name	Wireless Thermometer
Model	WT702
Manufacturer	Raiing Medical Company
Registration Address	Building #2, No.7 Chuangxin Road, Tech Park, Changping District, Beijing, China.
Manufacture Address	Building #2, No.7 Chuangxin Road, Tech Park, Changping District, Beijing, China.
Service Tel	0086 - 10 - 64118658
Email	service@raiing.com